



BASW
The professional association for
social work and social workers

What next for social work with Older People?

Pete Feldon

Gerry Nosowska



United Nations Principles for Older Persons

- Independence
- Participation
- Care
- Self-fulfilment
- Dignity

BASW

The professional association for
social work and social workers



- The importance of social work with older people
- Why this area of work needs particular expertise
- Current developments in adult social care that impact on social work with older people

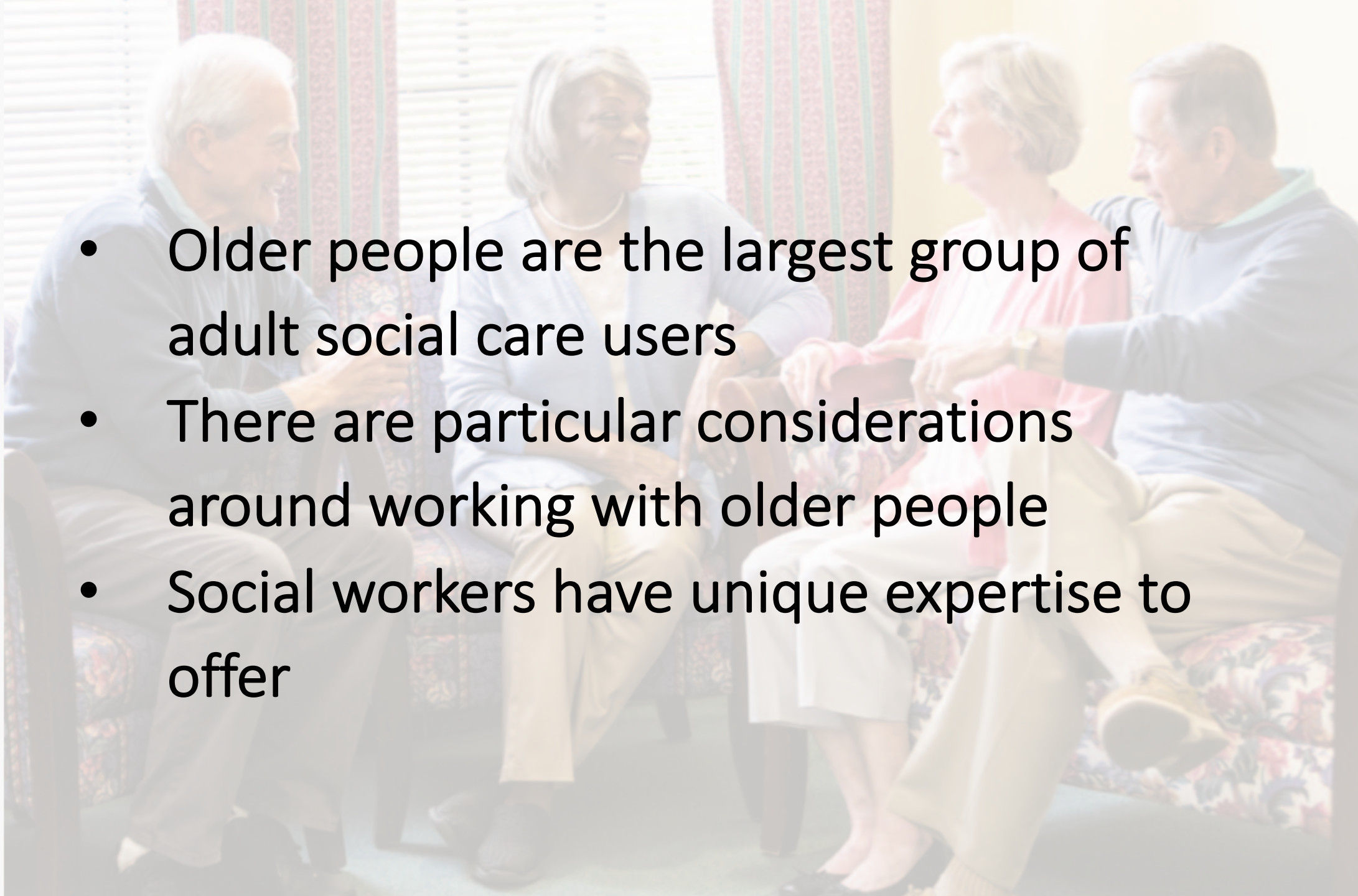




BASW

The professional association for
social work and social workers

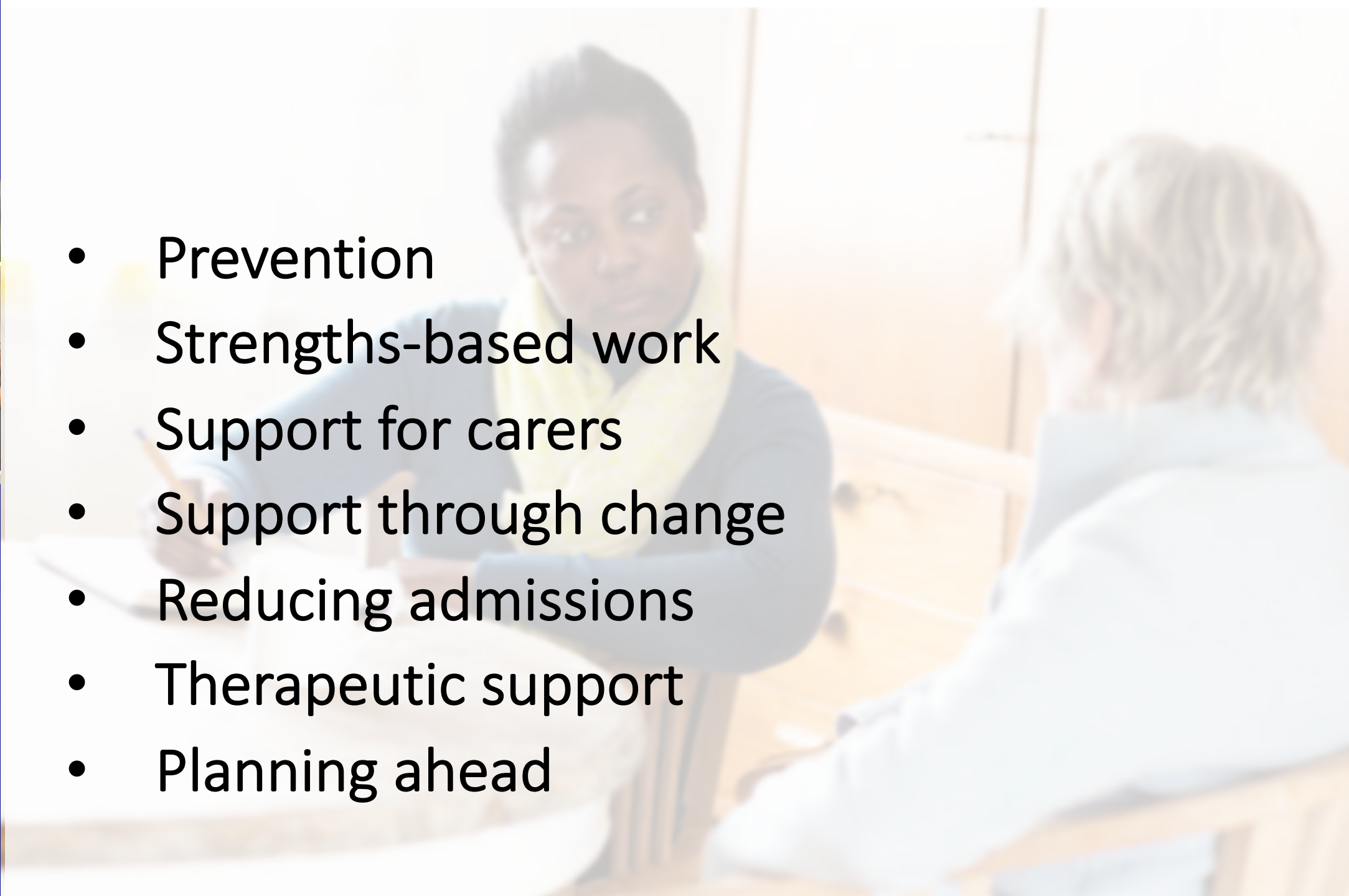
- Older people are the largest group of adult social care users
- There are particular considerations around working with older people
- Social workers have unique expertise to offer





BASW
The professional association for
social work and social workers

- Prevention
- Strengths-based work
- Support for carers
- Support through change
- Reducing admissions
- Therapeutic support
- Planning ahead



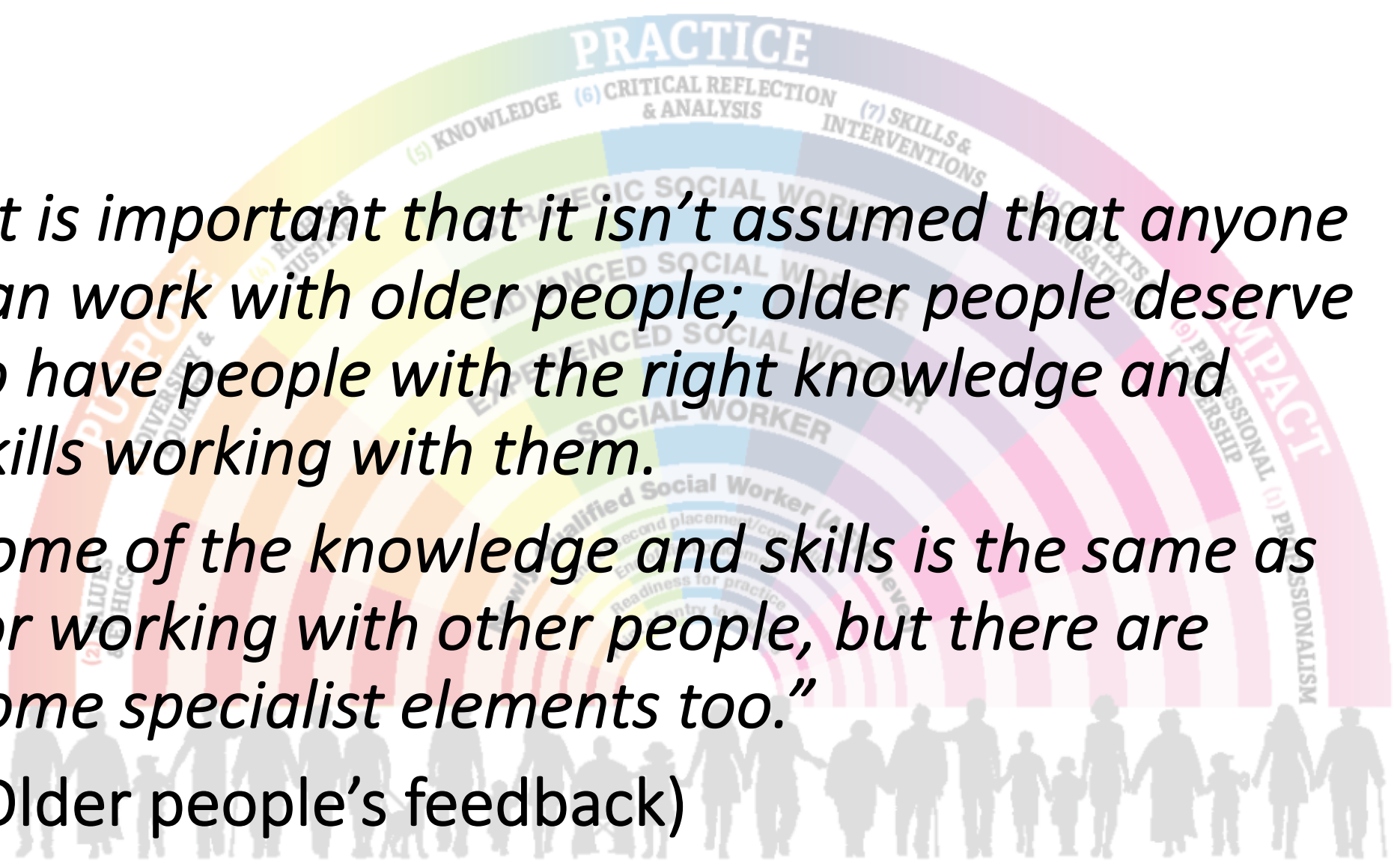


BASW
The professional association for
social work and social workers

“It is important that it isn’t assumed that anyone can work with older people; older people deserve to have people with the right knowledge and skills working with them.

Some of the knowledge and skills is the same as for working with other people, but there are some specialist elements too.”

(Older people’s feedback)





BASW

The professional association for
social work and social workers

- Look at the capabilities for your level
- Identify areas for development
- Look at the pathway and think about
 - The role you have
 - What learning and development would work for you
 - What support do you have
 - How do you show your expertise



Social work needs to be:

- Ethical
- Expert
- Trusted

BASW

The professional association for
social work and social workers



“The indicators suggest that need for social care measured as the proportion of the [older] population is stable, or even falling. However, the numbers of older people have grown significantly (and are projected to increase more sharply in the coming decades). There is also evidence that a significant amount of need among older people is not currently being met.”

Social Care 360 [Kings Fund]

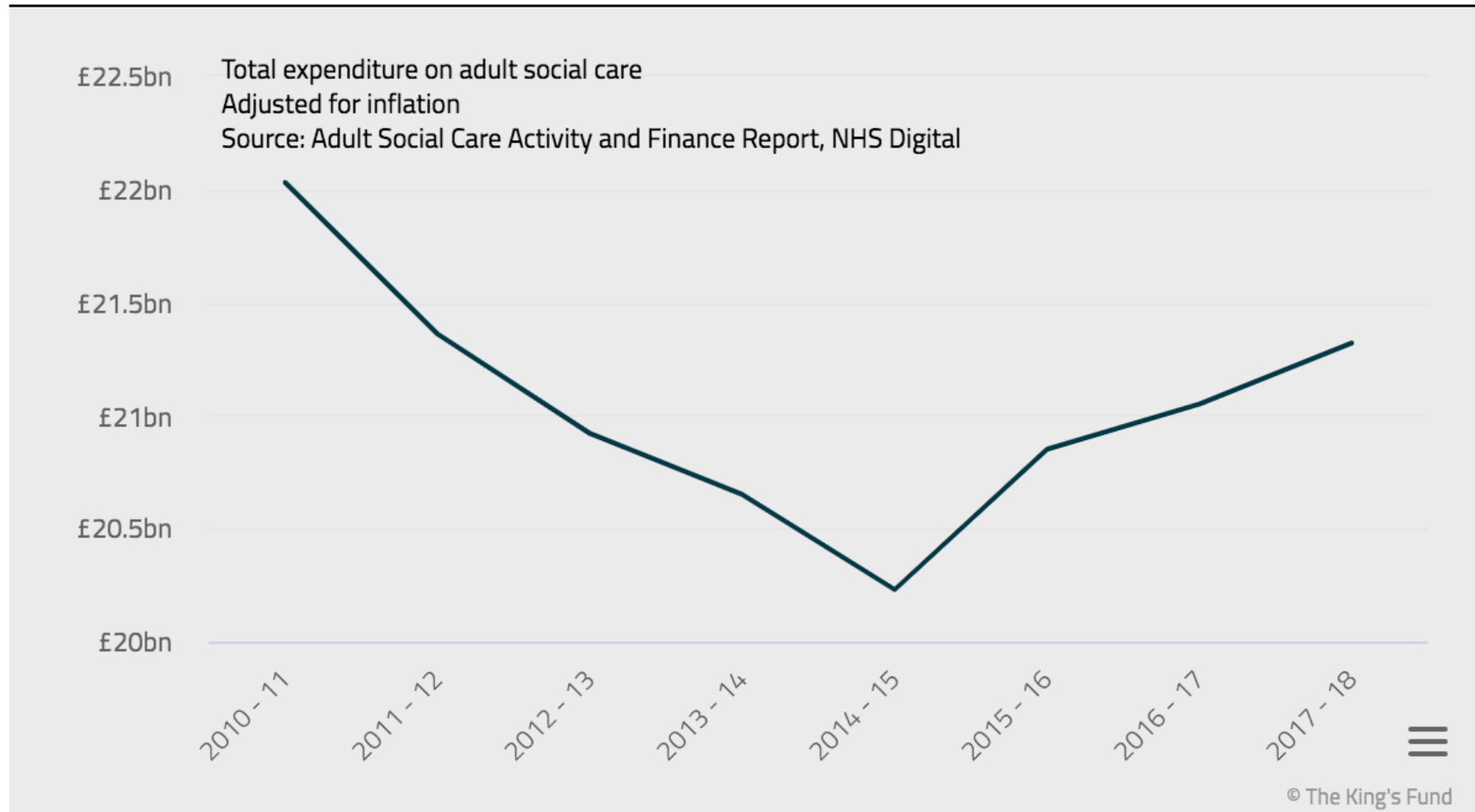
BASW

The professional association for
social work and social workers



BASW
The professional association for
social work and social workers

While adult social care funding has increased in recent years, it is still £700m below 2010/11 levels



Social Care 360 [Kings Fund]



- “Many of the issues we see appear to be driven by attempts to ration scarce resources.... any attempts to reduce costs must also properly consider the impact on the rights and dignity of people who use services, and must comply with both the letter and the spirit of the Care Act 2014.”

Ombudsman’s Annual Review of Social Care Complaints 2018-19

- “Councils should give the necessary support, and foster the right culture, to allow frontline staff to appropriately challenge management decisions and hold the line on what their assessment of the situation needs.”

Ombudsman’s Under Pressure (December 2018)



BASW
The professional association for
social work and social workers

In some local authorities the way that the controlling of expenditure is being achieved places social workers in situations that are potentially in conflict with the BASW Code of Ethics e.g.

- creating unjust policies and practices,
- limiting the ability of social workers to make considered professional judgements
- making it difficult for social workers to justify the decisions of the local authority to people who use services.

BASW Adults Policy Practice & Education Group

An Ethical Approach to Meeting Needs in Adult Social Care [DRAFT]

“This guidance outlines how social workers can use the BASW Code of Ethics for Social Work to address concerns that financial pressures are leading to the requirements of the Care Act 2014 being compromised, resulting in the needs of people who require care and support not being fully met. It aims to provide support for social workers to assert their professional expertise and to show how they can put into practice the Professional Capability Framework (PCF) in respect of the obligation to apply ethical principles.”

The Future of Adult Social Care [Approved for consultation]

“One major challenge is that local authorities have a statutory duty under the Care Act 2014 to help more people than they have funding to support and, for those that do have support, there is insufficient funding to do so to the level their needs require. BASW’s submission to the Local Government Association (LGA) review of adult social care in 2018 called for a review of the application of the Care Act 2014. We also believe the current system described by the Local Government Association (LGA) as the ‘eligibility driven approach’ must end.”



BASW

The professional association for
social work and social workers



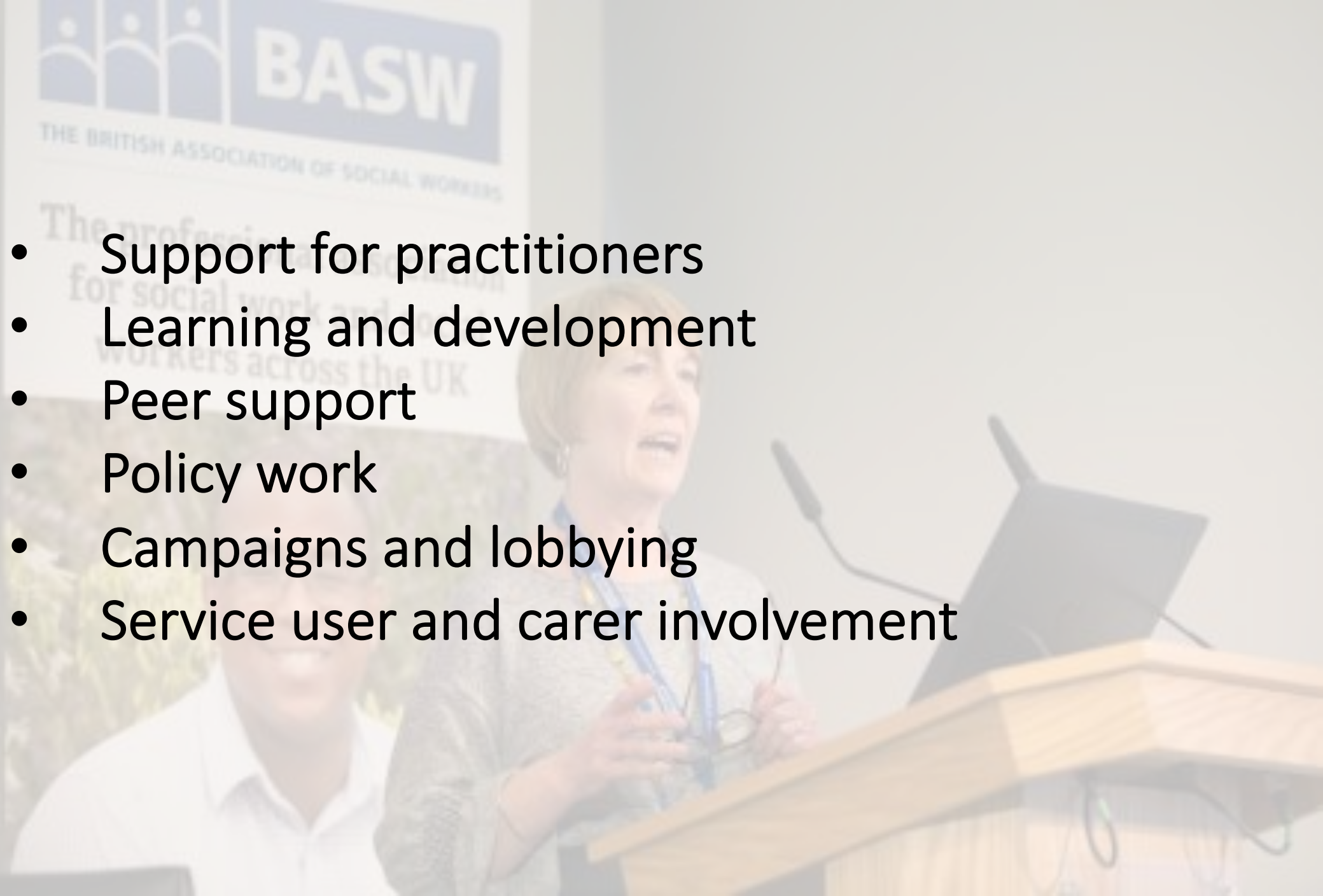
- Green paper?
- Funding model
- Integration
- Social work will remain essential





BASW
The professional association for
social work and social workers

- Support for practitioners
- Learning and development
- Peer support
- Policy work
- Campaigns and lobbying
- Service user and carer involvement





www.basw.co.uk



@BASW_UK



The British Association of
Social Workers

BASW

The professional association for
social work and social workers